



NinI-like serine-threonine phosphatase (CDS_0029)

DNA methyltransferase (CDS_0034)

phosphatase (CDS_0032)

GTP-binding domain (CDS_0037)

HNH endonuclease (CDS_0010)

integrase (CDS_0002)

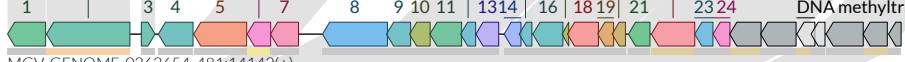


HNH endonuclease (CDS_0006)

NinI-like serine-threonine phosphatase (CDS_0022)

integrase (CDS_0002)

DNA methyltransferase (CDS_0027)



NinI-like serine-threonine phosphatase (CDS_0017)



NinI-like serine-threonine phosphatase (CDS_0022)

integrase (CDS_0002)

HNH endonuclease (CDS_0008)



NinI-like serine-threonine phosphatase (CDS_0016)

integrase (CDS_0004)



NinI-like serine-threonine phosphatase (CDS_0034)

Lar anti-RM (APIS033) (CDS_0022)

HNH endonuclease (CDS_0020)

DNA methyltransferase (CDS_0039)

Arc-like repressor (CDS_0001)

endolysin (CDS_0009)

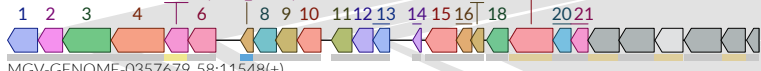
integrase (CDS_0014)



NinI-like serine-threonine phosphatase (CDS_0019)

Lar anti-RM (APIS033) (CDS_0007)

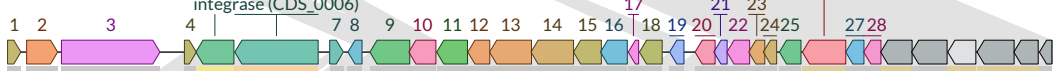
HNH endonuclease (CDS_0005)



HNH endonuclease (CDS_0005)

integrase (CDS_0006)

NinI-like serine-threonine phosphatase (CDS_0026)



HNH endonuclease (CDS_0002)

integrase (CDS_0003)

NinI-like serine-threonine phosphatase (CDS_0023)



DNA methyltransferase (CDS_0133)

CDS_0132

CDS_0128 transposase (CDS_0127)



DNA methyltransferase (CDS_0003)

CDS_0004



DNA methylase (CDS_0003)

transposase (CDS_0009)

CDS_0004

CDS_0010

