

Putative transposon Tn552 DNA-invertase bin3 (PDJBBHIJ_00002)

DNA-invertase hin (PDJBBHIJ_00003)

PDJBBHIJ_00004

PDJBBHIJ_00005

PDJBBHIJ_00001 PDJBBHIJ_00006

IMGPR_plasmid_2630968717_000004 9:3692(+)

LDHMMCMP_00001

LDHMMCMP_00063 LDHMMCMP_00006

IMGPR_plasmid_2630968616_000004 54773:3722(+)

Druantia_II_DruM (JCDPHBHG_00021)

IS3 family transposase ISXac3 (JCDPHBHG_00030)

IS3 family transposase ISXac3 (JCDPHBHG_00029)

Tn3 family transposase ISXc4 (JCDPHBHG_00026)

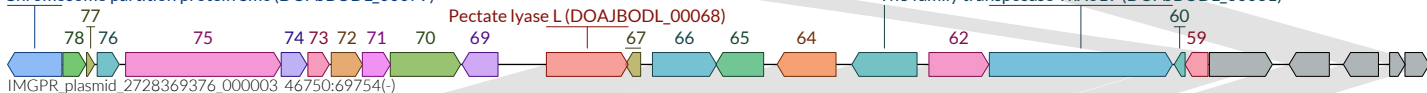


IMGPR_plasmid_2816332304_000002 17642:32252(+)

Chromosome partition protein Smc (DOAJBODL_00063)

Chromosome partition protein Smc (DOAJBODL_00079)

Tn3 family transposase TnXo19 (DOAJBODL_00061)



IMGPR_plasmid_2728369376_000003 46750:69754(-)

Chromosome partition protein Smc (AJEFGGEG_00007)

Tn3 family transposase TnXo19 (AJEFGGEG_00009)

Pectate lyase L (AJEFGGEG_00002)



IMGPR_plasmid_2630968536_000004 12:15193(+)

Tn3 family transposase TnXo19 (GOPPLJBP_00003)



IMGPR_plasmid_2630968379_000005 86:9044(+)

9000 nt

Defence