

VanR-ABDEGLN family response regulator transcription factor (NF033117.2) (KPJAEFM_00007)

HTH-type transcriptional regulator PgrR (KPJAEFM_00001)

putative copper-binding protein PcoE (KPJAEFM_00005)

Adaptive-response sensory-kinase SasA (KPJAEFM_00006)

Copper resistance protein D (KPJAEFM_00008)

Antitoxin ParD1 (KPJAEFM_00003)

KPJAEFM_00004

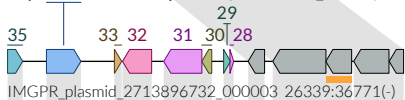
Copper resistance protein C (KPJAEFM_00009)



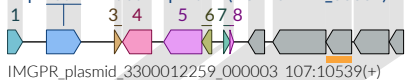
EOEKJMJF_00001



Replication initiation protein (NGKDKPII_00034)



Replication initiation protein (FONLJNND_00002)



multidrug efflux RND transporter periplasmic adaptor subunit MexE (NF045904.1) (DLABKOAN_00113)

putative ABC transporter permease (DLABKOAN_00112)

PRK|PRK10026.1: glutaredoxin-dependent arsenate reductase (NF007456.1) (DLABKOAN_00091)

Nucleoid occlusion factor SlmA (DLABKOAN_00114)

arsenite efflux transporter membrane subunit ArsB (NF033877.0) (DLABKOAN_00090)

AdeFGH efflux pump (VF0504) (DLABKOAN_00109)

Coenzyme A disulfide reductase (DLABKOAN_00101)

Arsenical resistance operon trans-acting repressor ArsD (DLABKOAN_00088)

Serine recombinase PinR (DLABKOAN_00108)

Arsenical resistance operon trans-acting repressor ArsD (DLABKOAN_00093)

Tn3 family transposase ISEc63 (DLABKOAN_00121)

csa3_I_II_III_IV_V_VI_2 (DLABKOAN_00102)

Arsenical pump-driving ATPase (DLABKOAN_00092)

Sigma L (VF0855) (DLABKOAN_00115)

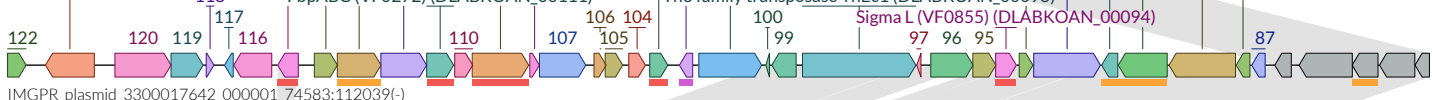
HP-NAP (VF0052) (DLABKOAN_00103)

Arsenical pump-driving ATPase (DLABKOAN_00094)

FbpABC (VF0272) (DLABKOAN_00111)

Tn3 family transposase TnEc1 (DLABKOAN_00098)

Sigma L (VF0855) (DLABKOAN_00094)



PRK|PRK10026.1: glutaredoxin-dependent arsenate reductase (NF007456.1) (EHPHGLJI_00011)

arsenite efflux transporter membrane subunit ArsB (NF033877.0) (EHPHGLJI_00012)

Arsenical resistance operon trans-acting repressor ArsD (EHPHGLJI_00014)

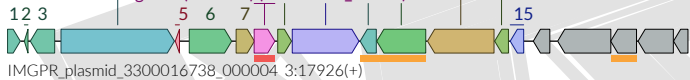
Arsenical resistance operon trans-acting repressor ArsD (EHPHGLJI_00009)

Arsenical pump-driving ATPase (EHPHGLJI_00013)

Arsenical pump-driving ATPase (EHPHGLJI_00010)

Tn3 family transposase TnEc1 (EHPHGLJI_00004)

Sigma L (VF0855) (EHPHGLJI_00008)



PRK|PRK10026.1: glutaredoxin-dependent arsenate reductase (NF007456.1) (DFGMBDEG_00010)

arsenite efflux transporter membrane subunit ArsB (NF033877.0) (DFGMBDEG_00011)

Arsenical resistance operon trans-acting repressor ArsD (DFGMBDEG_00013)

Arsenical resistance operon trans-acting repressor ArsD (DFGMBDEG_00002)

Putative transposon Tn552_DNA-invertase bin3 (DFGMBDEG_00007)

C4-dicarboxylic acid transporter DauA (DFGMBDEG_00006)

Arsenical pump-driving ATPase (DFGMBDEG_00009)

Arsenical pump-driving ATPase (DFGMBDEG_00012)

Tn3 family transposase ISSba14 (DFGMBDEG_00008)

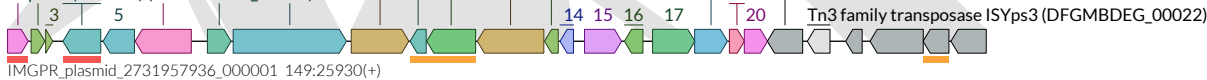
ISNCY family transposase ISSen7 (DFGMBDEG_00021)

Sigma L (VF0855) (DFGMBDEG_00001)

3'-5' exonuclease DinG (DFGMBDEG_00018)

Capsule (VF0274) (DFGMBDEG_00004)

Tn3 family transposase ISYps3 (DFGMBDEG_00022)



10000 nt

Defence Virulence AMR